

# BLACK and BLUE ROGAINE

19th APRIL 1997

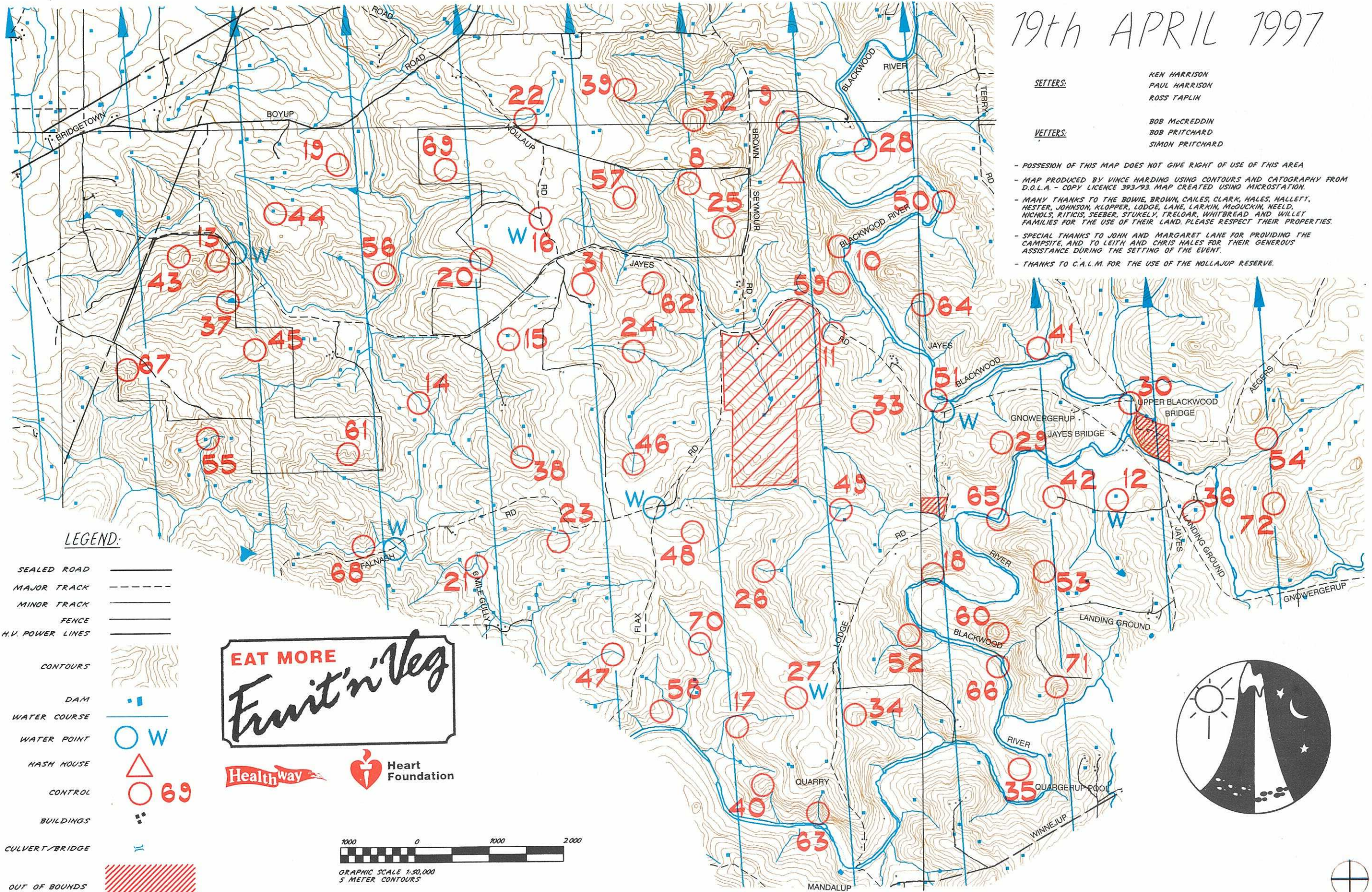
**SETTERS:**

KEN HARRISON  
PAUL HARRISON  
ROSS TAPLIN

**VETTERS:**

BOB McCREDDIN  
BOB PRITCHARD  
SIMON PRITCHARD

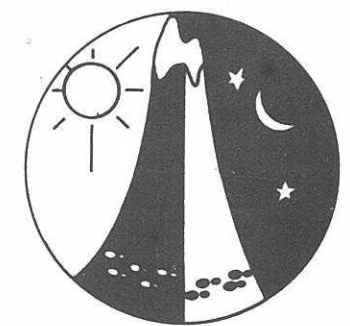
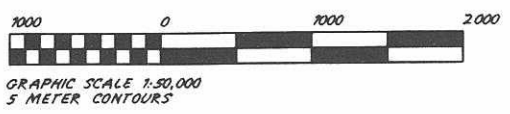
- POSSESSION OF THIS MAP DOES NOT GIVE RIGHT OF USE OF THIS AREA
- MAP PRODUCED BY VINCE HARDING USING CONTOURS AND CATOGRAPHY FROM D.O.L.A. - COPY LICENCE 393/93. MAP CREATED USING MICROSTATION.
- MANY THANKS TO THE BOWIE, BROWN, CALES, CLARK, HALES, HALLETT, HESTER, JOHNSON, KLOPPER, LODGE, LANE, LARKIN, McGUICKIN, NEELD, NICHOLS, RITICIS, SEEBER, STUKELY, TRELOR, WHITBREAD AND WILLET FAMILIES FOR THE USE OF THEIR LAND. PLEASE RESPECT THEIR PROPERTIES.
- SPECIAL THANKS TO JOHN AND MARGARET LANE FOR PROVIDING THE CAMPSITE, AND TO LEITH AND CHRIS HALES FOR THEIR GENEROUS ASSISTANCE DURING THE SETTING OF THE EVENT.
- THANKS TO C.A.L.M. FOR THE USE OF THE NOLLAJUP RESERVE.



**LEGEND:**

- SEALED ROAD
- MAJOR TRACK
- MINOR TRACK
- FENCE
- H.V. POWER LINES
- CONTOURS
- DAM
- WATER COURSE
- WATER POINT
- HASH HOUSE
- CONTROL
- BUILDINGS
- CULVERT/BRIDGE
- OUT OF BOUNDS

**EAT MORE**  
*Fruit'n'Veg*





HH → 9 Due N° 800m

## BLACK AND BLUE ROGAINE, 19 APRIL 1997, CONTROL DESCRIPTIONS

Number	Points	Description	Number	Points	Description
0	0	Hash House	40	60	At the top of the spur
8	20	In the gully → 25 146° 800	41	60	At a homestead (ruin)
9	20	At the bend in the gully → 32 276° 1300	42	60	On an old hay bailer
10	20	In a broad gully → HH 326° 1200	43	70	At the eastern edge of a clearing
11	20	On the tree nearest a 5m boulder → 59 10° 700	44	70	At the south-eastern corner of the dam
12	20	At the southern edge of the dam	45	70	On the broad spur
13	30	In the gully	46	70	In the gully at the northern edge of the blue gums → 48 143° 1200
14	30	At the eastern end of a bare rockface	47	70	On the northern edge of a dam
15	30	At the dam in the broad saddle	48	70	BSN 2724 → 26 123° 1100
16	30	At the road junction → 57 82° 1200	49	70	At the creek junction → 18 130° 1500
17	30	On the tree nearest a 6m boulder	50	70	At a fence junction
* 18	30	Beside a small dam → 65 54° 1100	51	70	At the bend in the river on the south bank → 33 256°
19	40	On the broad spur	52	70	On the spur    1100
20	40	At the corner of the fenceline	53	70	In the saddle
21	40	At the creek junction	54	70	On a small spur
22	40	In the gully → 69 242° 1300	55	80	At the north-east corner of the dam
23	40	In an old growth pocket	56	80	On the knoll
24	40	In the watercourse → 46 184° 1600	57	80	On the broad spur → 8 84° 900
25	40	In the gully → 62 236° 1200	58	80	On a blackboy spur
26	40	In the gully → 49 77° 1300	59	80	On a small knoll on the spur → 10 5° 600
27	40	At a track junction	60	80	On the knoll
28	40	On the riverbank at the south-western end of the pool	61	90	On a spur
29	40	On the broad spur → 51 308° 1100	62	90	On the spur → 24 200° 1000
30	40	At the bridge	63	90	In the gully
31	50	At the northern edge of a clearing	64	90	At the head of the gully
32	50	On the spur → 39 300 298° 100	65	90	At the river bend, north bank → 29 116° 100
33	50	On the knoll → 11 346° 1200	66	90	In a slight depression
34	50	On a willow tree at the head of the gully	67	100	On a small spur
35	50	On the broad knoll	68	100	On the spur
36	50	At a windsock	69	100	In a broad gully → 16 122° 1400
37	60	At the western edge of the dam	70	100	On a small bridge
38	60	At a small dam	71	100	In the gully
39	60	On the spur → 22 256° 1400	72	100	On the western edge of the summit

20  
 50  
 60  
 40  
 100  
 30  
 80  
 90  
 40  
 70  
 70  
 100  
 40  
 70  
 50  
 70  
 90  
 20  
 80  
 20  
 1170

